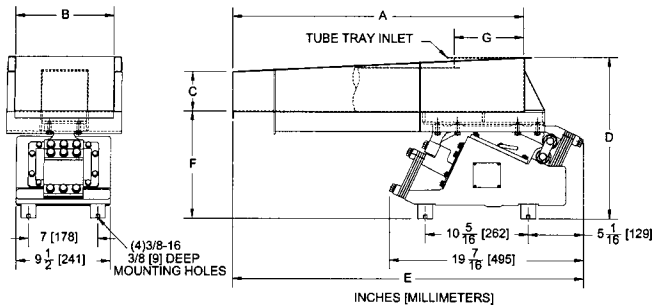


### MODEL HD-56

FOR FEEDING UP TO 500 CU FT (14 M<sup>3</sup>) PER HOUR



Power Supply	115V, 60 Cycle, Single Phase
Full Load Power Consumption	95 Watts
Full Load Power Input	1.4 Amp at 115V
Control	Model N12G30Hz-115
Weight (with control box)	200 lb. (91 kg)



TRAY TYPE	A Tray Length		B Tray Width		C	
	in	mm	in	mm	in	mm
Narrow Flat	38	965	10	254	4	102
Medium Flat	30	762	14	356	4	102
Wide Flat	24	610	17	432	4	102
Small Tubular	48	1219	4	102	4	102
Med. Tubular	42	1067	6	152	6	152
Large Tubular	38	965	8	203	8	203

TRAY TYPE	D		E		F		G	
	in	mm	in	mm	in	mm	in	mm
Narrow Flat	16 1/8	410	41 7/16	1053	10 5/8	270	-	-
Medium Flat	16 1/8	410	39 3/8	1000	10 5/8	270	-	-
Wide Flat	16 1/8	410	29 7/16	748	10 5/8	270	-	-
Small Tubular	15 5/8	397	51 9/16	1310	10 5/8	270	8	203
Med. Tubular	18 1/8	460	45 1/4	1149	10 5/8	270	12	304
Large Tubular	20 3/8	518	40 15/16	1039	10 7/8	276	16	406

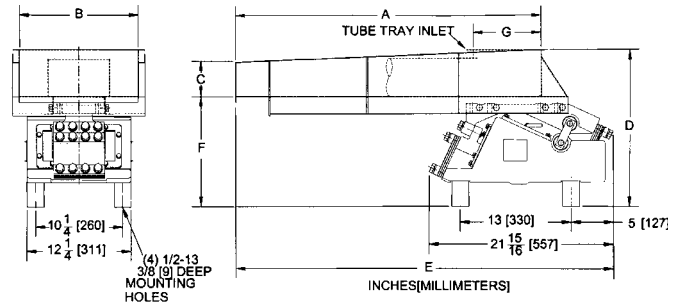
Available in NEMA 12.

### MODEL HD-66

FOR FEEDING UP TO 700 CU FT (20 M<sup>3</sup>) PER HOUR



Power Supply	115V, 60 Cycle, Single Phase
Full Load Power Consumption	165 Watts
Full Load Power Input	2.6 Amp at 115V
Control	Model N12G30Hz-115
Weight (with control box)	240 lb. (109 kg)



TRAY TYPE	A Tray Length		B Tray Width		C	
	in	mm	in	mm	in	mm
Narrow Flat	42	1067	12	305	4	102
Medium Flat	36	914	14	356	4	102
Wide Flat	30	762	16	406	4	102
Small Tubular	48	1219	6	152	6	152
Large Tubular	42	1067	8	203	8	203

TRAY TYPE	D		E		F		G	
	in	mm	in	mm	in	mm	in	mm
Narrow Flat	18 1/2	470	47	1194	13	330	-	-
Medium Flat	18 1/2	470	44 1/2	1130	13	330	-	-
Wide Flat	18 1/2	470	41 3/8	1051	13	330	-	-
Small Tubular	20 9/16	522	53 13/16	1367	13 1/8	333	8	203
Large Tubular	22 11/16	576	47 7/16	1205	13 3/8	340	12	304

Available in NEMA 12.