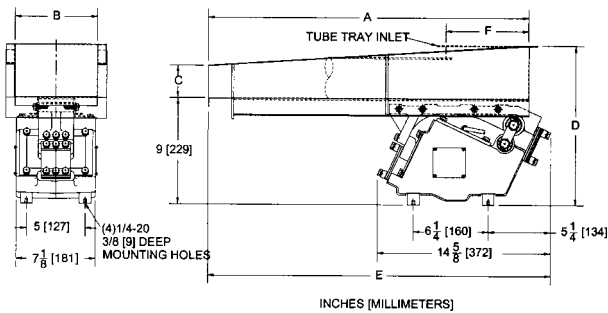


MODEL HD-36

FOR FEEDING UP TO 150 CU FT/HR (8.5 M³/HR)



Power Supply	115V, 30 Cycle, Single Phase
Full Load Power Consumption	37 Watts
Full Load Power Input	1.6 Amp at 115V
Control	Model N12G30Hz-115
Weight (with control box)	60 lb. (28.5 kg)



TRAY TYPE	A Tray Length		B Tray Width		C	
	in	mm	in	mm	in	mm
Narrow Flat	36	914	6	152	3	76
Medium Flat	30	762	8	203	3	76
Wide Flat	24	610	10	254	3	76
Small Tubular	30	762	3	76	3	76
Large Tubular	24	610	4	102	4	102

TRAY TYPE	D		E		F		G	
	in	mm	in	mm	in	mm	in	mm
Narrow Flat	13 1/2	344	37 15/16	963	-	-	9	229
Medium Flat	13 1/2	344	34 15/16	887	-	-	9	229
Wide Flat	13 1/2	344	29 5/8	753	-	-	9	229
Small Tubular	13 1/16	331	34 9/16	878	6	152	9 1/8	232
Large Tubular	14 1/16	357	28 9/16	726	8	203	9 1/8	232

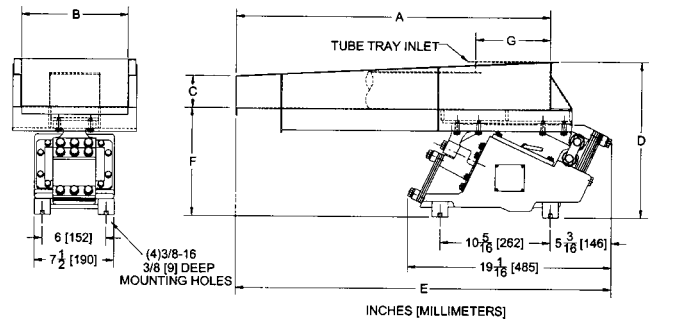
Available in NEMA 12.

MODEL HD-46

FOR FEEDING UP TO 400 CU FT (11 M³) PER HOUR



Power Supply	115V, 60 Cycle, Single Phase
Full Load Power Consumption	106 Watts
Full Load Power Input	1.5 Amp at 115V
Control	Model N12G30Hz-115
Weight (with control box)	120 lb. (54 kg)



TRAY TYPE	A Tray Length		B Tray Width		C	
	in	mm	in	mm	in	mm
Narrow Flat	36	914	8	203	3	76
Wide Flat	30	762	12	305	3	76
Small Tubular	36	914	4	102	4	102
Large Tubular	30	762	6	152	6	152

TRAY TYPE	D		E		F		G	
	in	mm	in	mm	in	mm	in	mm
Narrow Flat	14 3/8	365	38 13/16	986	9 15/16	252	-	-
Wide Flat	14 3/8	365	37 3/4	959	9 15/16	252	-	-
Small Tubular	15	382	37 9/16	954	9 15/16	252	8	203
Large Tubular	17 5/16	440	38 1/16	987	9 15/16	252	8	203

Available in NEMA 12.